



**TRANSPORTATION CABINET**

Frankfort, Kentucky 40622  
[www.transportation.ky.gov/](http://www.transportation.ky.gov/)

**Steven L. Beshear**  
Governor

**Michael W. Hancock, P.E.**  
Secretary

August 15, 2012

CALL NO. 320  
CONTRACT ID NO. 122653  
Addendum # 2

Subject: Cumberland County, FE02 029 0090 B00027N  
Letting August 17, 2012

(1) Added - Special Notes For Joint Sealing - Pages 25(a)-25(c) of 57

Proposal revisions are available at  
<http://transportation.ky.gov/Construction-Procurement>

Plan Revisions are available at: <http://www.lynnimaging.com/kytransportation/>

If you have any questions, please contact us at (502) 564-3500.

Sincerely,

A handwritten signature in blue ink that reads "Ryan Griffith".

Ryan Griffith  
Director  
Division of Construction Procurement

RG:jj

Enclosures



An Equal Opportunity Employer M/F/D

## **SPECIAL NOTE FOR JOINT SEALING**

Perform all work in accordance with the Kentucky Transportation Cabinet, Department of Highway's 2012 Standard Specifications for Road and Bridge Construction and applicable Supplemental Specifications, the Standard Drawings, and this Note. Section references are to the Standard Specifications.

This work consists of the following:

- (1) Furnish all labor, materials, tools, and equipment
- (2) Remove existing joint seal
- (3) Place Backer Rod
- (4) Install new joint seal
- (5) Maintain and control traffic
- (6) Any other work specified as part of this contract

### **II. MATERIALS**

**A. Silicone Rubber Sealant.** See Section 807.

### **III. CONSTRUCTION**

**A. Remove Existing Materials.** Remove the existing joint seal. Remove debris and/or expansion joint filler as directed by the Engineer. Dispose of all removed material entirely away from the job site.

**B. Blast Clean Edges.** Blast clean all existing edges until free of all laitance and deleterious substances immediately prior to the placement of the new joint seal.

**C. Silicone Rubber Sealant.** Place the silicone sealant as recommended by the manufacturer and in accordance with Section 609.03.05.

**D. Shop Plans.** Shop Plans will not be required. The contractor is responsible for obtaining field measurements and supplying properly sized materials to complete the work.

### **IV. MEASUREMENT**

**A. Joint Sealing.** The Department will measure the quantity in linear feet along the centerline of the joint.

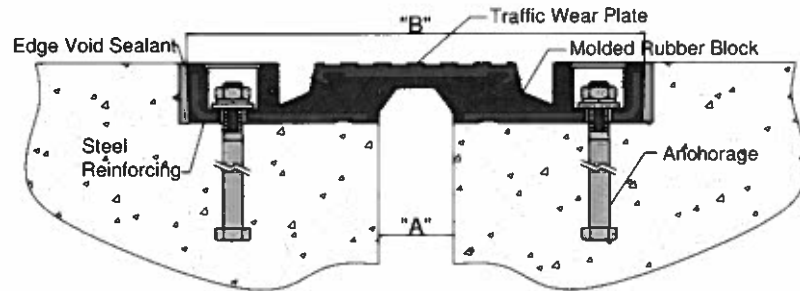
**V. PAYMENT**

**A. Expansion Joint Seal Replacement.** Payment at the contract unit price per linear foot via Bid Item #08540 "JOINT SEALING" is full compensation for removing specified existing materials, blast cleaning, furnishing and installing the silicone rubber sealant, and all incidental items necessary to complete the work within the specified pay limits as specified by this note.

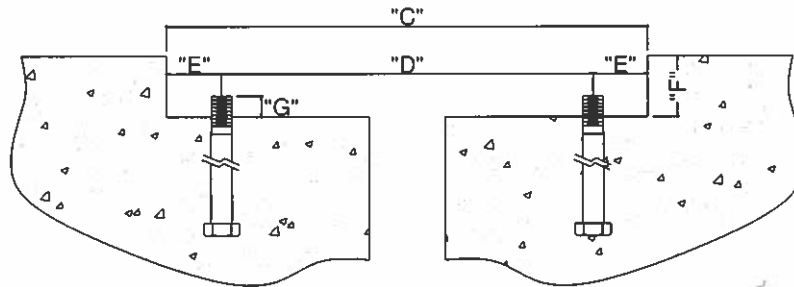
The Department will consider payment as full compensation for all work required by this note.



## TECHNICAL DATA:



## Blockout Data



## Movement Table:

Model Number	Molded Dimensions				Joint Opening "A"						System Width "B"			
	Width		Height		Min.		Max.		Total		Min.		Max.	
	in	mm	in	mm	in	mm	in	mm	in	mm	in	mm	in	mm
SR 2A	10.625	270	1.563	40	1.000	25	3.000	77	2.000	51	9.625	244	11.625	296
SR 2.5A	13.750	349	1.813	46	1.375	35	3.875	98	2.500	64	12.500	318	15.000	381
SR 4A	23.000	584	2.125	54	1.000	25	5.000	127	4.000	102	21.000	533	25.000	635
SR 6.5A	28.000	711	3.000	76	1.500	38	8.000	203	6.500	165	24.750	629	31.250	794
SR 9	37.375	949	3.750	95	1.750	44	10.750	273	9.000	229	32.875	835	41.875	1064
SR 13	55.000	1397	5.000	127	2.000	51	15.000	381	13.000	330	48.500	1232	61.500	1562

Model Number	"C"				"D"				"E"		"F"		"G"	
	Min.		Max.		Min.		Max.							
	in	mm	in	mm	in	mm	in	mm	in	mm	in	mm	in	mm
SR 2A	10.125	257	12.125	308	7.375	187	9.375	239	1.375	35	1.813	46	1.250	32
SR 2.5A	13.000	330	15.500	394	9.750	248	12.250	311	1.625	41	2.063	52	1.500	38
SR 4A	21.500	546	25.500	648	17.625	448	21.625	549	1.938	49	2.375	60	1.750	44
SR 6.5A	25.250	641	31.750	806	21.000	533	27.500	699	2.125	54	3.250	83	2.000	51
SR 9	33.375	848	42.375	1076	29.000	737	38.000	965	2.188	56	4.000	102	2.250	57
SR 13	49.000	1245	62.000	1575	43.500	1105	56.500	1435	2.750	70	5.250	133	2.750	70